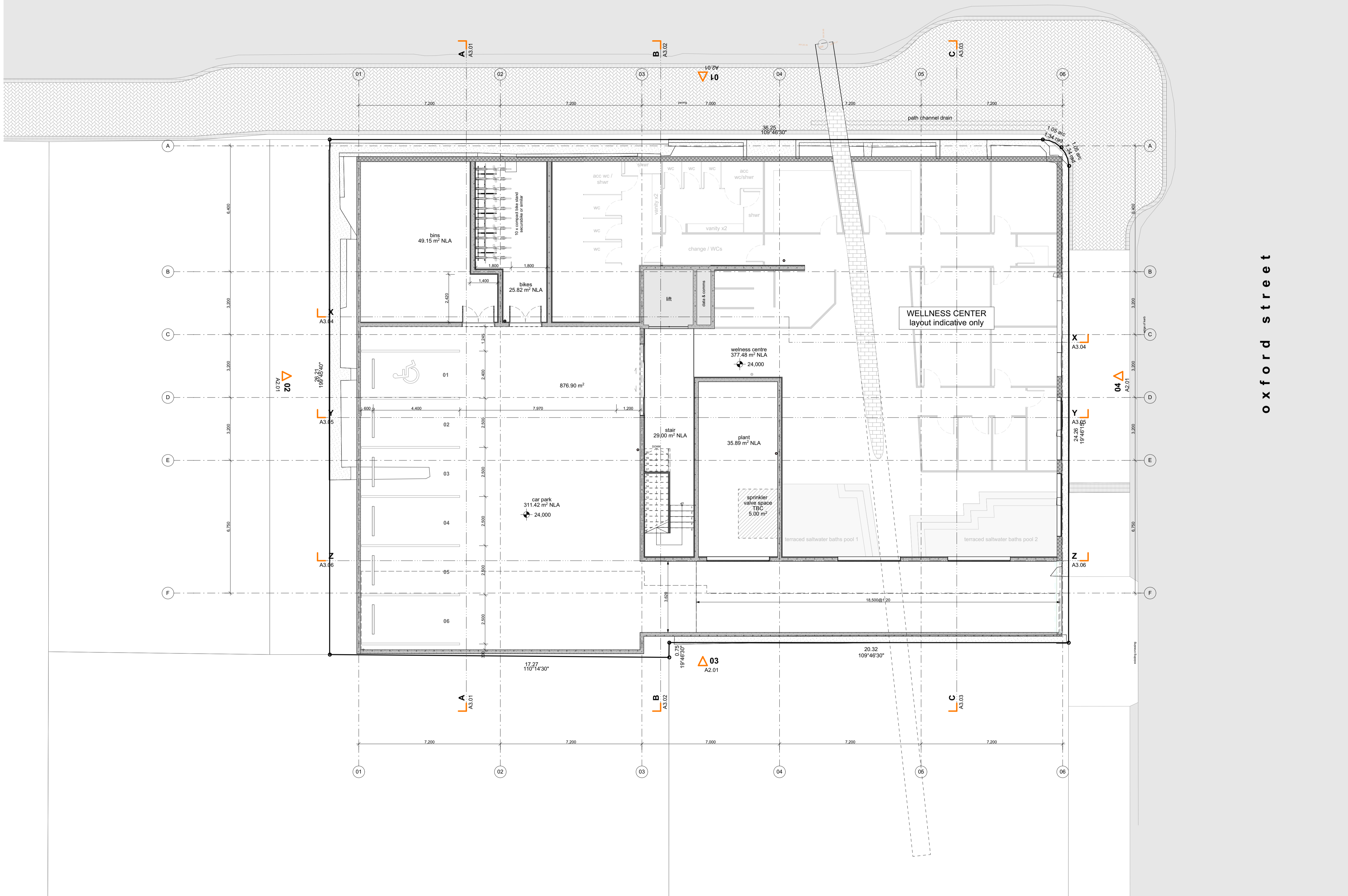


london street



wall schedule	
precast concrete with patterned exterior	
insitu concrete	
Swisspearl Pre-finished Fibrecement cladding TBC	
140 timber framing / GIB	
90 timber framing / GIB	
Kingspan Dri-design on RAB on cavity on timber framing	
GIB intertenancy wall, 2 x Fireline both sides on 90mm timber framing, 25mm separation	
Kingspan Dri-design on RAB on cavity on timber framing	

All areas are NLA



oxford street

01 proposed plan: basement
Scale 1:100 @ A1



colletts corner
1 - 11 London Street
for Office for Holistic Urbanism

- General notes:
1. Do not scale from drawings.
 2. Contractor must verify all dimensions on site before commencing work.
 3. The copyright in the design & drawings is owned by Foley Group Architecture Ltd.

Issue ID	Issue Date	Issue Name
A	18/12/2020	30% Developed Design Issue

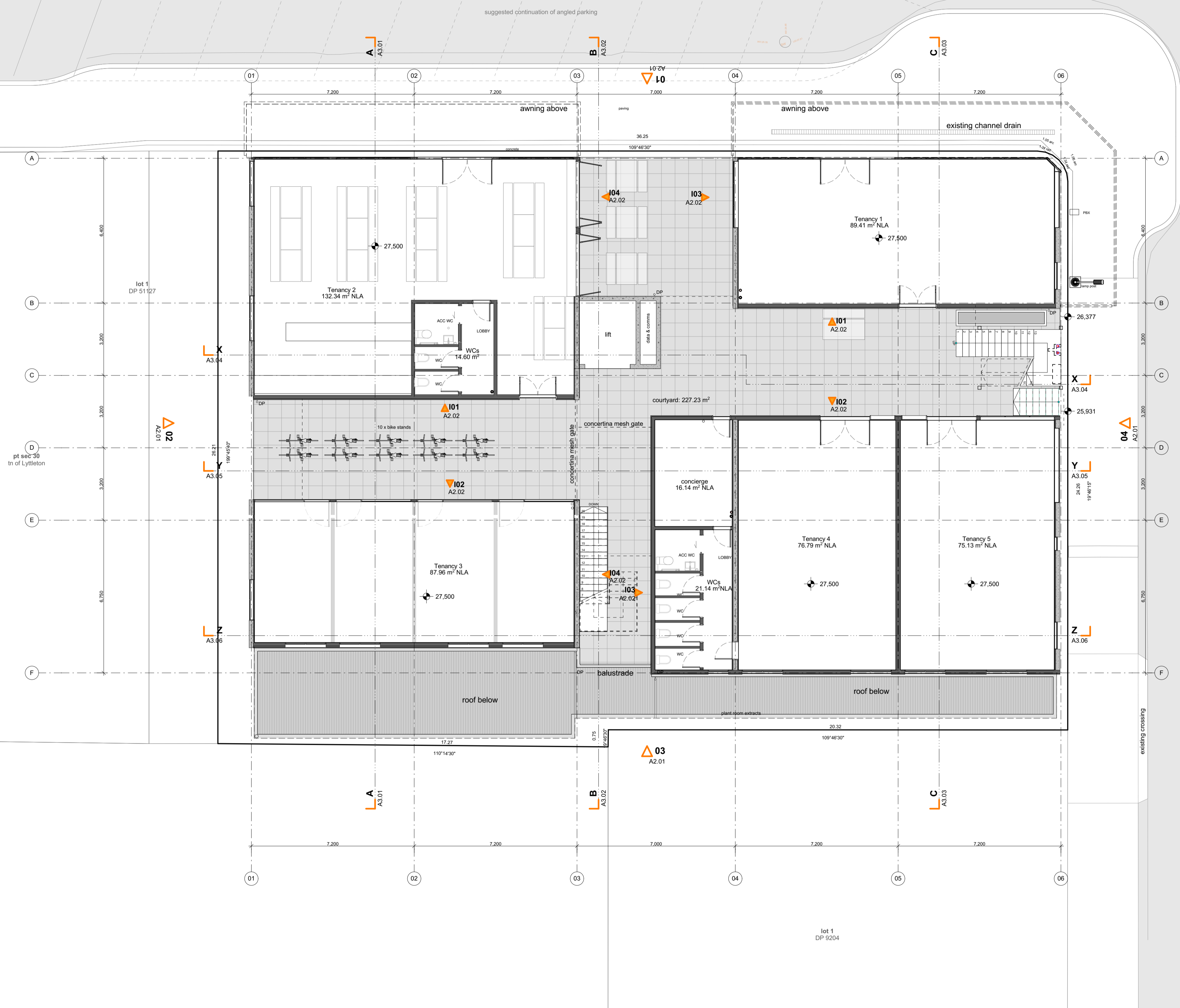
3094
A120
1100 @ A1
proposed plan: basement

london street



wall schedule	
precast concrete with patterned exterior	
insitu concrete	
Swisspearl Pre-finished Fibrecement cladding TBC	
140 timber framing / GIB	
90 timber framing / GIB	
Kingspan Dri-design on RAB on cavity on timber framing	
GIB intertenancy wall, 2 x Fireline both sides on 90mm timber framing, 25mm separation	
Kingspan Dri-design on RAB on cavity on timber packing on 140 timber framing	

All areas are NLA



oxford street

01 proposed plan: ground floor
Scale 1:100 @ A1

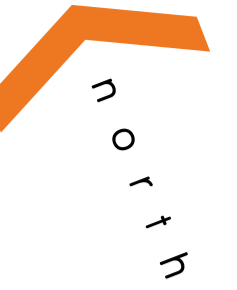


colletts corner
1 - 11 London Street
for Office for Holistic Urbanism

- General notes:
1. Do not scale from drawings.
 2. Contractor must verify all dimensions on site before commencing work.
 3. The copyright in the design & drawings is owned by Foley Group Architecture Ltd.

Issue ID	Issue Date	Issue Name
A	18/12/2020	30% Developed Design Issue

3094
A121
1100 @ A1
proposed plan: ground floor



wall schedule	
precast concrete with patterned exterior	
insitu concrete	
Swisspearl Pre-finished Fibrecement cladding TBC	
140 timber framing / GIB	
90 timber framing / GIB	
Kingspan Dri-design on RAB on cavity on timber framing	
GIB intertenancy wall, 2 x Fireline both sides on 90mm timber framing, 25mm separation	
Kingspan Dri-design on RAB on cavity on timber packing on 140 timber framing	

All areas are NLA



01 | proposed plan: first floor
Scale 1:100 @ A1

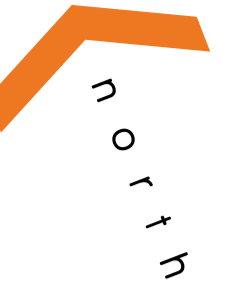


colletts corner
1 - 11 London Street
for Office for Holistic Urbanism

- General notes:
1. Do not scale from drawings.
 2. Contractor must verify all dimensions on site before commencing work.
 3. The copyright in the design & drawings is owned by Foley Group Architecture Ltd.

Issue ID	Issue Date	Issue Name
A	18/12/2020	30% Developed Design Issue

3094
A122
1100 @ A1
proposed plan first floor



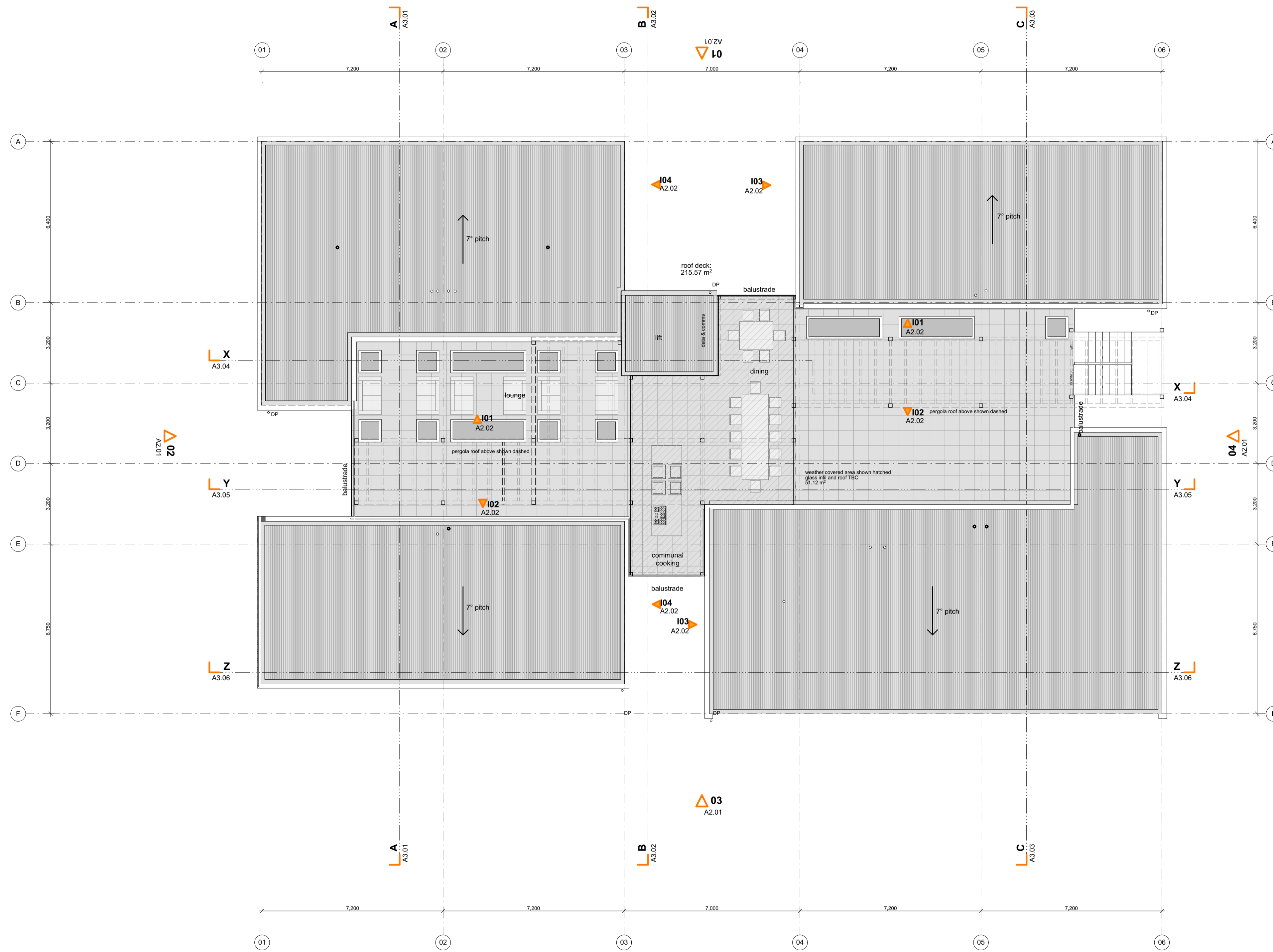
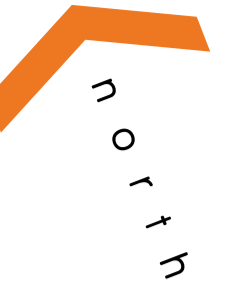
wall schedule	
precast concrete with patterned exterior	
insitu concrete	
Swisspearl Pre-finished Fibrecement cladding TBC	
140 timber framing / GIB	
90 timber framing / GIB	
Kingspan Dri-design on RAB on cavity on timber framing	
GIB intertenancy wall, 2 x Fireline both sides on 90mm timber framing, 25mm separation	
Kingspan Dri-design on RAB on cavity on timber framing	
All areas are NLA	



01 proposed plan: second floor
Scale 1:100 @ A1

General notes:
 1. Do not scale from drawings.
 2. Contractor must verify all dimensions on site before commencing work.
 3. The copyright in the design & drawings is owned by Foley Group Architecture Ltd.

Issue ID	Issue Date	Issue Name
A	18/12/2020	30% Developed Design Issue



wall schedule	
precast concrete with patterned exterior	
insitu concrete	
Swisspearl Pre-finished Fibrecement cladding TBC	
140 timber framing / GIB	
90 timber framing / GIB	
Kingspan Dri-design on RAB on cavity on timber framing	
GIB intertenancy wall, 2 x Fireline both sides on 90mm timber framing, 25mm separation	
Kingspan Dri-design on RAB on cavity on timber framing on 140 timber framing	

All areas are NLA

01 proposed plan: roof deck
Scale 1:100 @ A1



colletts corner
1 - 11 London Street
for Office for Holistic Urbanism

- General notes:
1. Do not scale from drawings.
 2. Contractor must verify all dimensions on site before commencing work.
 3. The copyright in the design & drawings is owned by Foley Group Architecture Ltd.

Issue ID	Issue Date	Issue Name
A	18/12/2020	30% Developed Design Issue

3094
A124
1100 @ A1
proposed plan: roof deck